



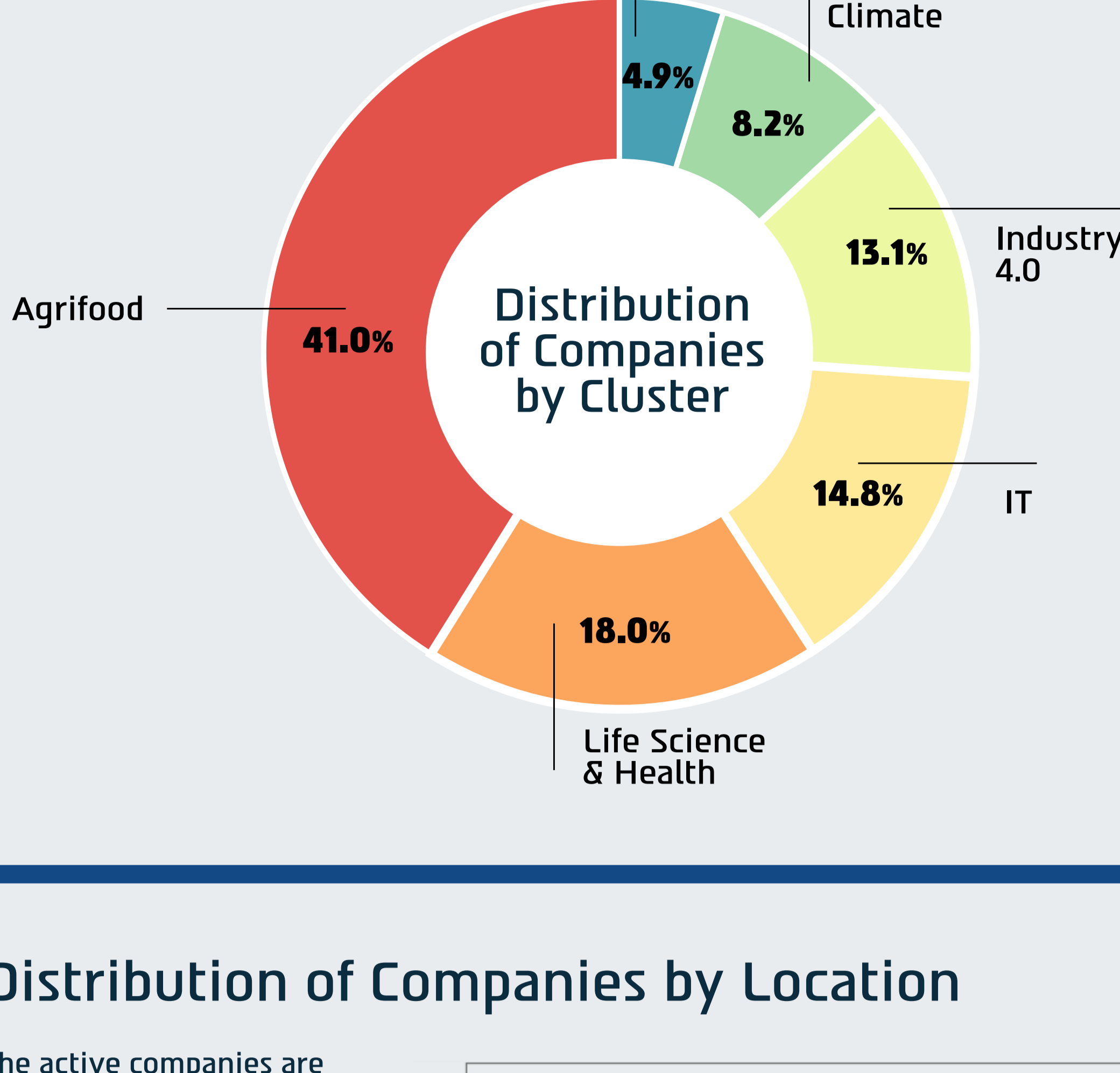
Regional Knowledge center East Galilee

Newsletter – September 2025

Status of Technology Companies in the Eastern Galilee

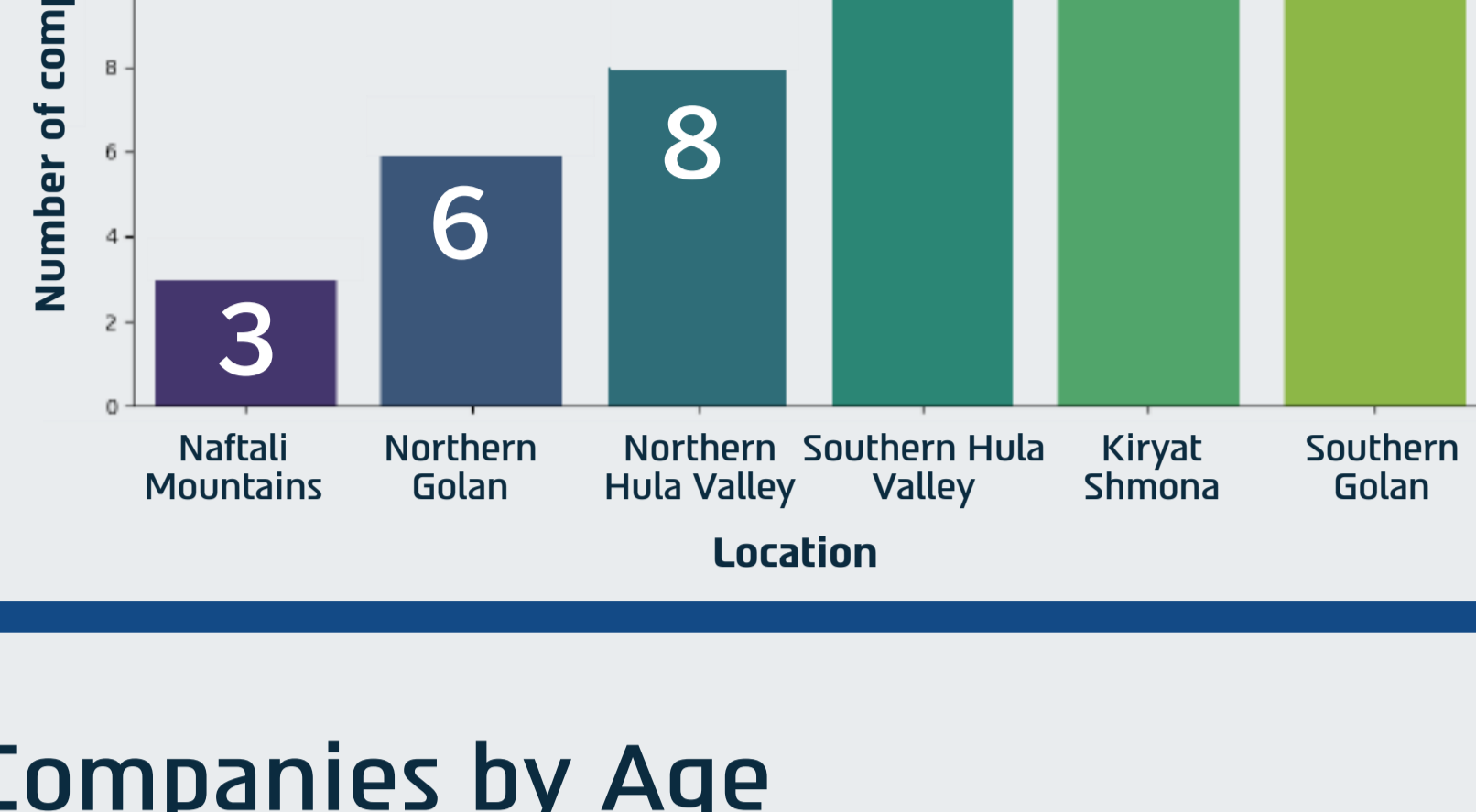
The "Iron Swords" war, which broke out following the events of October 7, 2023, has profoundly transformed the country as a whole, and the Eastern Galilee and Golan in particular. All aspects of life have been affected by the war, including industry and high-tech. The impact has led some businesses to temporarily relocate their operations, while others have shut down permanently or left the region altogether.

In response, the Eastern Galilee Regional Knowledge Center, in partnership with the Bloomberg Foundation and the AgriFoodTech Vally, launched a strategic initiative to map technology companies in the region. This effort stems from the recognition of the critical role these companies play as key growth engines in the recovery and future development of the north.



Distribution of Companies by Location

The active companies are spread across approximately 28 localities. Most of the technology companies are located north of the Koach Junction, with the main concentration in Kiryat Shmona. In the mountainous area (Safed, Naftali Mountains, and the communities of Merom HaGalil), there are three technology companies—two in Sasa and one in Bar'am.



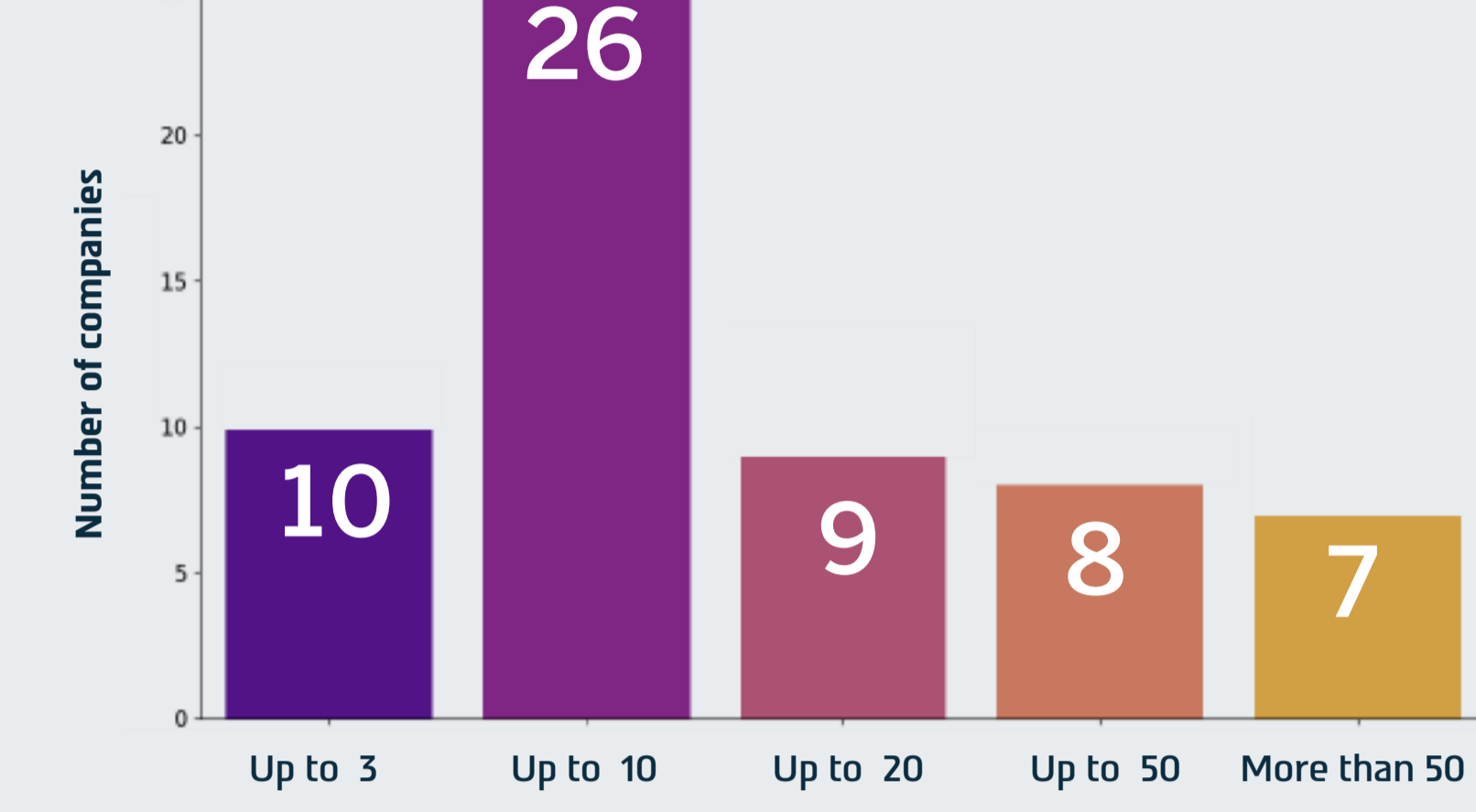
Distribution of Companies by Age

Most of the active companies in the region are young firms that have been operating for up to 5 years. The majority of veteran companies, which have been active for more than 20 years, are traditional firms that maintain technological activity as part of their overall operations (Huliot, Amiad, Shamir, Plasan, and others).



Distribution of Companies by Number of Employees

Over 50% of the companies are early-stage firms with up to 10 employees

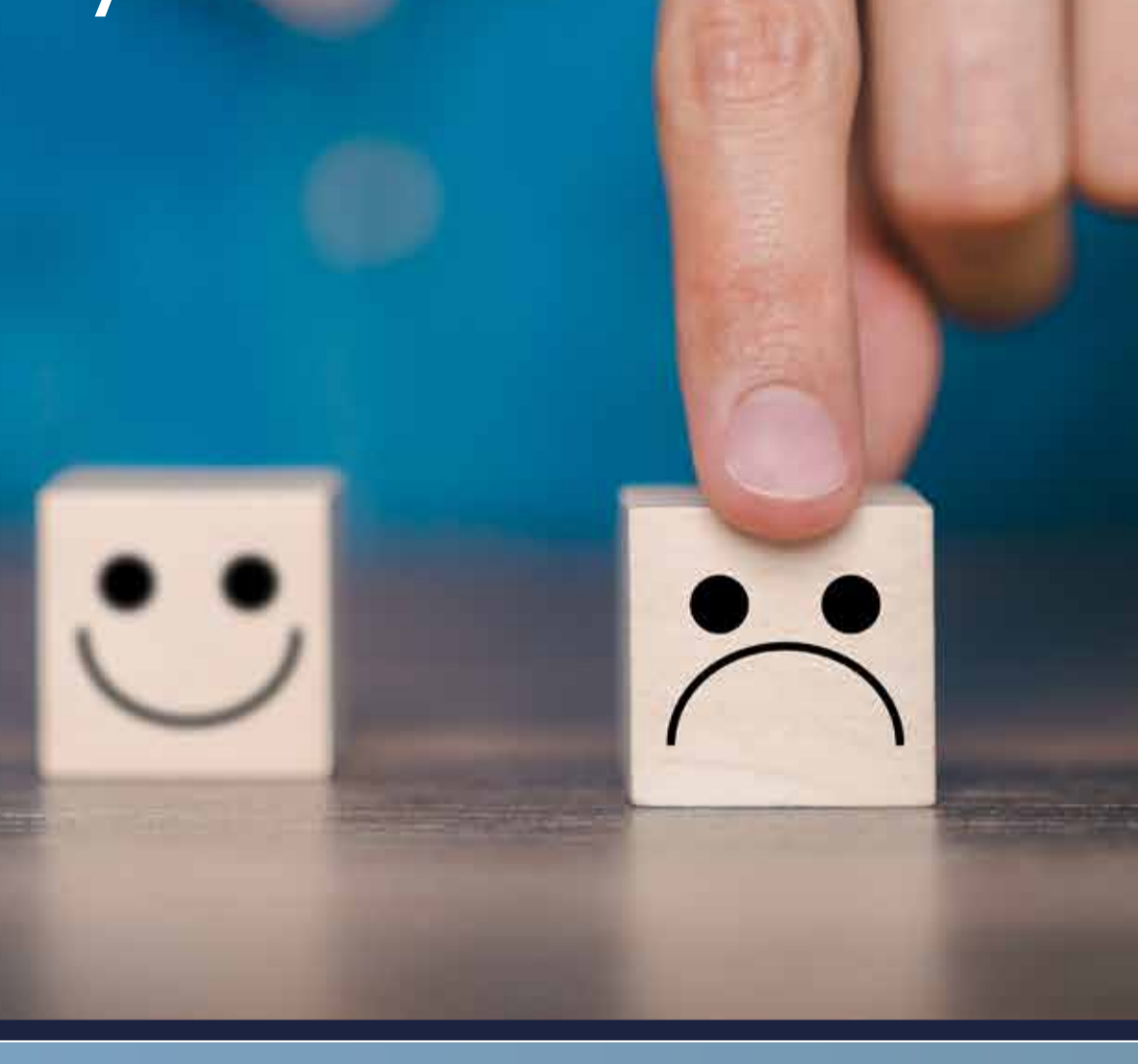


Current research in the Eastern Galilee

The Regional Knowledge Center is currently running two major surveys:

A Residents' Survey conducted now for the third time, measuring residents' satisfaction in key areas such as sense of security, economic situation, emotional well-being, and willingness to remain in the region.

A Business Survey capturing the reality of local small, medium, and large businesses after residents' return home.

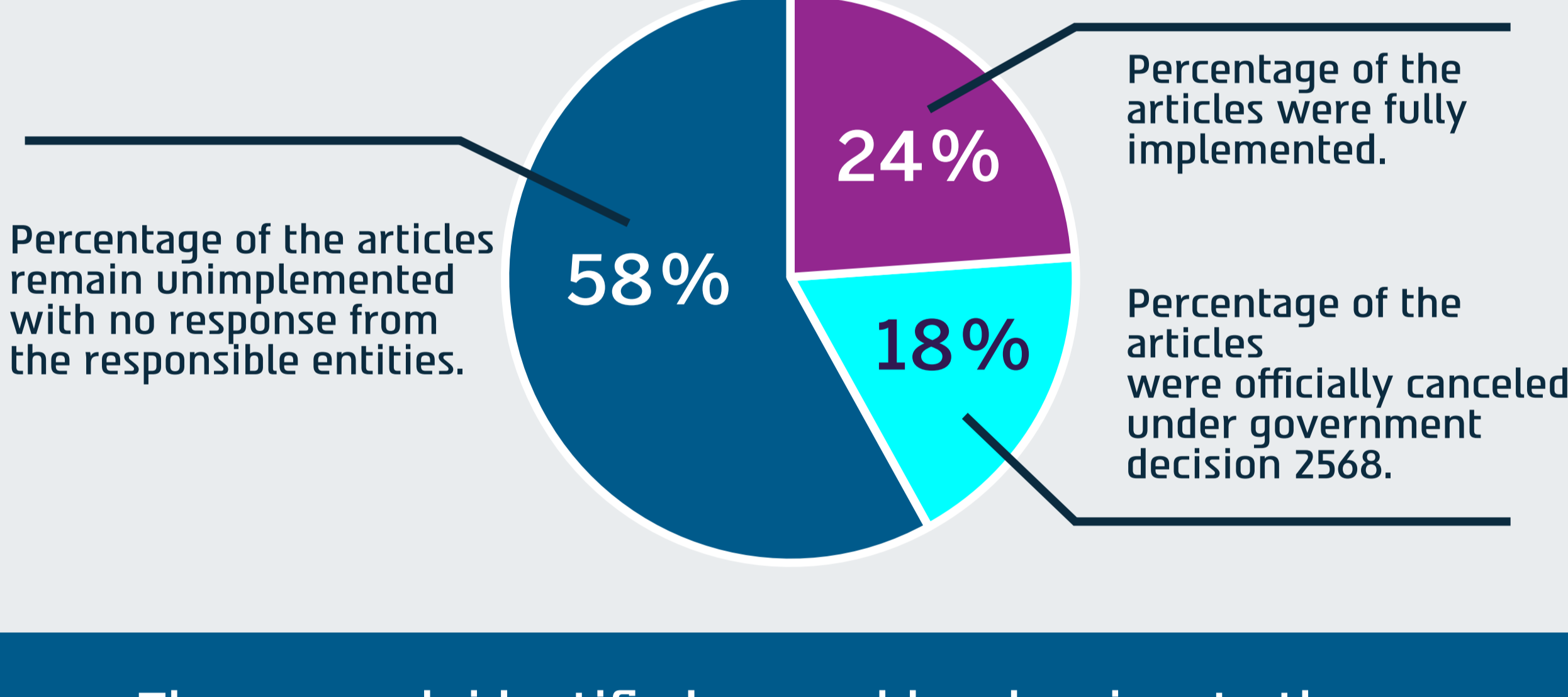


Monitor Report – Government Resolution 1786 on the Rehabilitation of the North¹

As part of the joint Monitor Program of the Policy Practice Track in the Department of Social Work at Tel-Hai College, the Eastern Galilee Regional Knowledge Center, and the Citizens' Empowerment Center in Israel, the implementation of **Government Resolution 1786 on the Rehabilitation of the North** (adopted on May 27, 2024) was examined.

Government Resolution 1786 was designed to rehabilitate the north in the aftermath of the economic, social, and infrastructural damages caused by the "Iron Swords" war. The resolution included a broad set of measures in the fields of employment, economy, welfare, health, community resilience, and education, accompanied by significant dedicated budgets. Its overarching goal was to halt outmigration from the region and to lay the groundwork for sustainable recovery.

Within this report, the operational clauses of the resolution were analyzed, and the status of their implementation was reviewed. The examination was based on official sources, government ministry data, Knesset discussion protocols, and information from research institutes and civil society organizations.



The research identified several key barriers to the implementation of the resolution:

- 1** Cancellation of essential clauses without functional alternatives.
- 2** Lack of transparency and public reporting to both the public and oversight bodies.
- 3** Despite budget approvals, some funds were not actually transferred to the local authorities.
- 4** Budget reallocations between clauses without tangible outcomes on the ground, undermining budgetary effectiveness.
- 5** Absence of a comprehensive master plan or measurable targets; the lack of a framework document and operational coordination between agencies led to delays, overlaps, and gaps.
- 6** Force majeure constraints significantly affected the implementation of the resolution during wartime. For example, rocket fire in the north delayed infrastructure works and staff training.
- 7** High turnover in key positions, particularly of the chief project manager, undermined the ability to advance the implementation of the resolution.

1. Tel Hai Academic College (University of Kiriath Shmona on the rise) students obtained the data, led by the coordinator Eilat Etgar.

Mapping Culture & Arts in the North

מרכז ידע אזורי גליל מזרחי | The Beracha Foundation | صندوق برخا

The **Beracha Foundation**, together with the **Eastern Galilee Regional Knowledge Center**, is leading a comprehensive mapping of the cultural and artistic ecosystem across northern Israel – including institutions, creators, spaces, and cultural activities taking place throughout the region.

The goal is to create a shared asset: a database and information infrastructure on the field of culture and the arts in the north.

- This resource will enable:**
- Strategic and coordinated action among various stakeholders.
 - Strengthening of the regional creative ecosystem.
 - Promotion of high-quality, accessible cultural activities for residents of the north.



Dear residents of the Eastern Galilee, and our municipal leadership partners,

A new year is upon us – a year of hope, renewal, and shared action. This year we return to the north after a period of challenges and upheaval. Coming back home is a testament to the resilience, faith, and joint determination of us all – residents and local authorities alike – in facing these difficult times.

As the new year begins, we pray for the swift and safe return of the hostages and missing persons, and for peace and security to be restored to all the communities of the north and throughout the country.

The Eastern Galilee Regional Knowledge Center will continue to stand by your side as a trusted partner: collecting, analyzing, and sharing knowledge that supports recovery, development, and growth across the region. We believe that collaboration, knowledge, and trust have the power to strengthen communities, empower local leadership, and build a safer and more prosperous future.

May the new year bring peace and security, health and prosperity to all residents and municipalities, and mark the beginning of a renewed flourishing in the Eastern Galilee.

Shanah Tovah

Dr. Ayala Cohen
Head of the Eastern Galilee Regional Knowledge Center



For more information:
Regional Knowledge Center
meiraat@telhai.ac.il