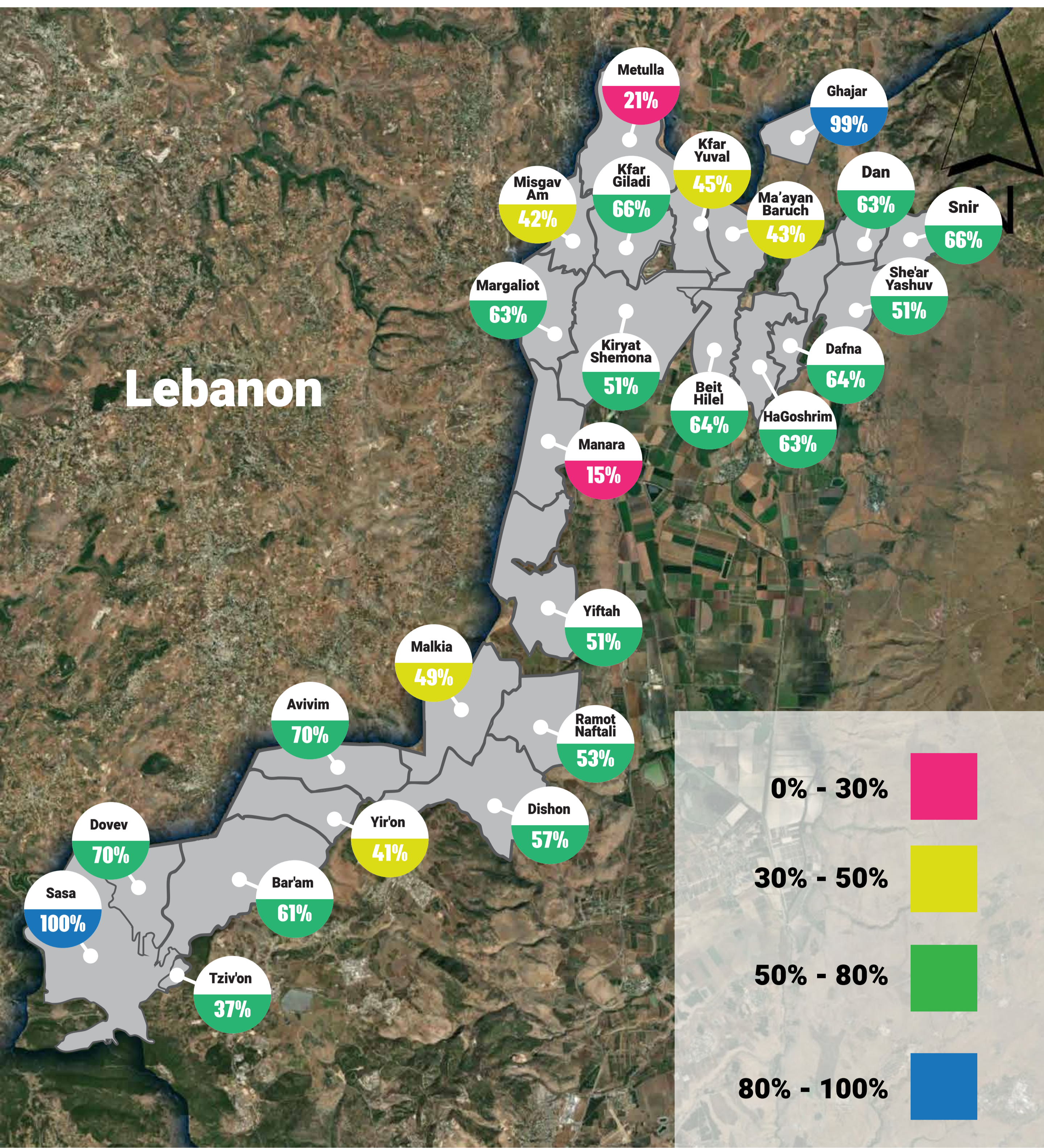


Eastern Galilee Residents Situation

Newsletter – May 2025

The Return Home¹

Below are the percentages of evacuees who have returned to their homes since the government decision in March 2025.



1. According to data from the authorities current as of May 3rd 2025

Brookdale Institute Youth Survey²

In collaboration with the Eastern Galilee Regional Knowledge Center.

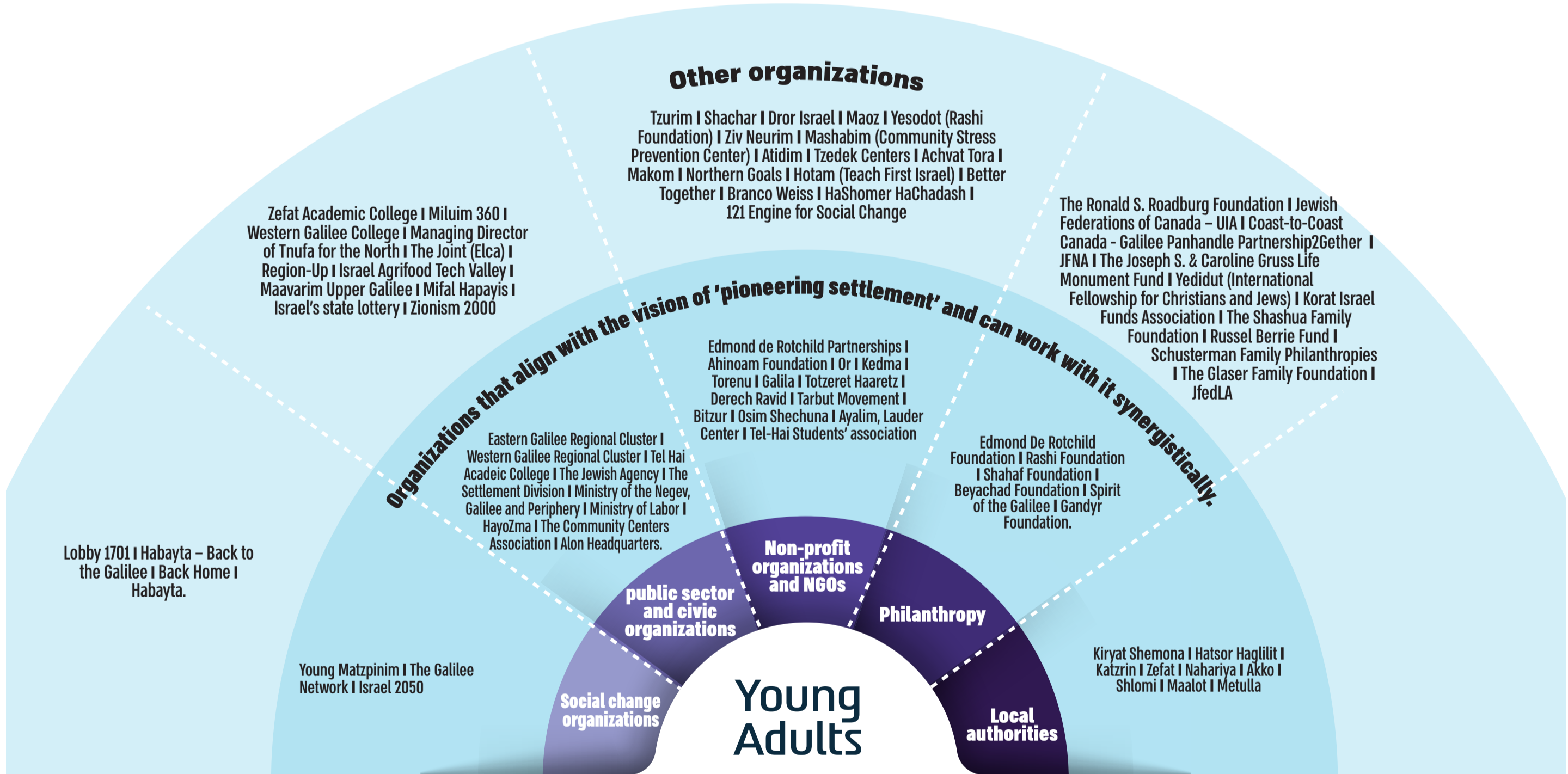


2. From the data of a youth survey conducted by the Brookdale Institute for the Youth Authority. The survey was conducted in January-February 2025 and 216 young people aged 18-34 from the northern border region participated.

Investments and programs focused on Young Adults



As part of the "Pioneer Settlement" initiative led by the Rashi Foundation and the Edmond de Rothschild Foundation, the Eastern Galilee Regional Knowledge Center conducted a comprehensive mapping of investments and programs focused on young adults in the Eastern and Western Galilee.



Building a Regional Database

Eastern Galilee Economic Development

The Eastern Galilee is an area of strategic importance with significant economic potential. Intervention programs for the region's economic development were built and implemented before the war, and now the need to continue a focused initiative for economic rehabilitation and development of the Eastern Galilee is vital and urgent.

In response to this need, the Eastern Galilee Cluster, Tel-Hai Academic College, the Agri-Foodtech Management, Together Fund, Rashi Foundation, Bloomberg Initiative for Regionalism, and the Regionup Program from JDC-Tevet have formed a joint initiative. They have joined forces to build a comprehensive and updated database on economic growth and development. This database will serve as a central tool for collecting, analyzing, and providing access to relevant data metrics in the field of economic development in the Eastern Galilee.

The database, which the Regional Knowledge Center will develop, will include data in various fields. This collaboration recognizes the importance of pooling resources and knowledge to drive an effective and sustainable rehabilitation process.

The database will be open and accessible to all stakeholders: companies, businesses, organizations, foundations, and authorities.

If you have suggestions for metrics and types of information, as well as relevant data in the field of economic development to be included in the database, please contact Meirav Atmor at 052-5783119 or Meiraat@telhai.ac.il

For more information:
Regional Knowledge Center
meiraat@telhai.ac.il

