

Eastern Galilee Residents Situation

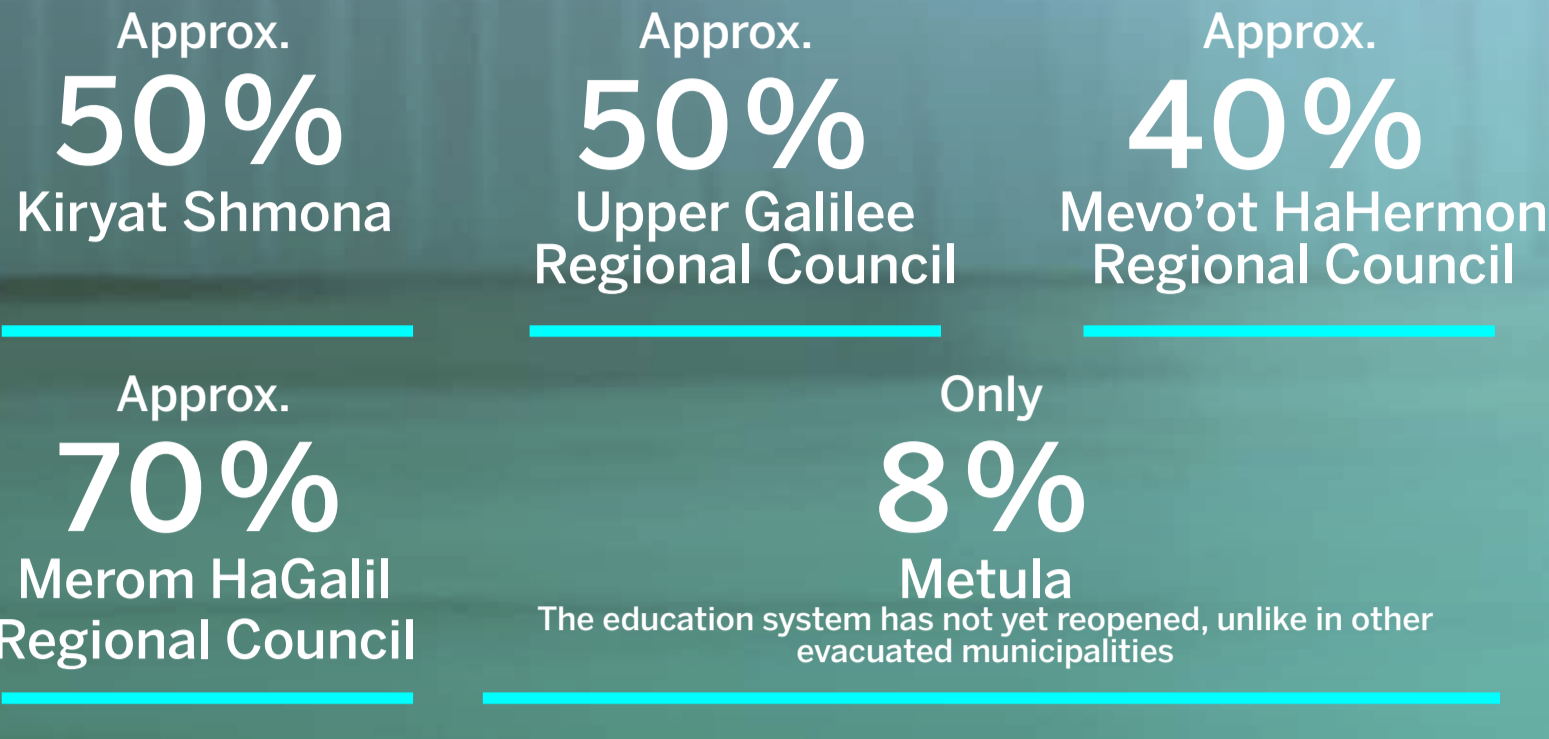
Newsletter – March 2025

The Return Home¹

In a Resident Status Survey conducted in November 2024, 67% of the residents who were evacuated or self-evacuated expressed their desire to return home.

The return rates are as follows:

As of March 20, 2025



1. According to data from authorities and government information centers

Innovative Course for Empowering Local Authorities: Data-Driven Decision-Making

In early March, a unique course on data-driven decision-making in local authorities was launched, bringing together 25 representatives from various municipalities in the Eastern Galilee Cluster. Developed with the understanding that data is a critical strategic resource for effective municipal management, the course provides managers with cutting-edge, practical tools that enable them to drive evidence-based change in their respective fields.

The first session, led by Yakir Partush, a BI and decision-making expert, focused on embedding a data-driven culture, identifying urban challenges that can be addressed through data, and exploring innovative tools in dashboards and key performance indicators (KPIs).

Investing in data-driven municipal leadership is an investment in local authorities' and residents' future. We invite additional organizations to join this important initiative, which paves the way for a smarter, more connected, and forward-thinking municipal future.



Employment over the last year²



2. Employment Service data, as of 2/26/2025



Tourism in the Eastern Galilee: A Key Economic Pillar³

In normal times, tourism serves as a major economic foundation for the Eastern Galilee:



Impact of the War:

A business survey conducted in August 2024 by the Eastern Galilee Regional Knowledge Center revealed that:



Additionally, a December 2023 survey found that 51% of small business owners in the tourism sector suffered severe financial damage.

3. East Galilee Cluster data

The Galilee Agrifoodtech Administration



The Galilee Agrifoodtech Administration is a regional strategic coordinating body established nearly 4 years ago by 14 organizations from various disciplines, including Tel-Hai College University in development, MIGAL Research Institute, Eastern Galilee Cluster, Kiryat Shmona Municipality, Mevo'ot Hermon Regional Council, Upper Galilee Regional Council, Golan Heights Economic Development Company, Fresh Start and Gaia Incubators, Milouot Laboratories, Rashi Foundation, Biyachad Carasso Family Foundation, Margalit Startup Nation, and the Lauder Foundation. The Administration's goal is to lead the establishment of a world-class ecosystem for food and agricultural innovation at both national and international levels.

Before the Iron Swords War, there were over 80 companies operating in the Eastern Galilee region. We work daily with our administration partners and additional stakeholders to build significant anchors and infrastructure for establishing a leading ecosystem. Despite the objective challenges, we at the Administration see this period as an amazing opportunity for ecosystem development. We would be delighted to expand our collaborations and continue sharing the meaningful work we are doing for Eastern Galilee and its residents

Ofer Rivlin, CEO of the Agrifoodtech

The Eastern Galilee Regional Knowledge Center is working to collect comprehensive data about companies and initiatives operating in our region. We invite you to be an active part in building this database! If you manage a business, startup, or initiative in the agrifood tech and high-tech sector in Eastern Galilee or are planning to operate in the area in the future - we would love to hear from you. Share with us your activity details, the unique challenges you face, and your needs from the developing ecosystem.

Contact us : meiraat@telhai.ac.il



For more information:
Regional Knowledge Center
meiraat@telhai.ac.il

