

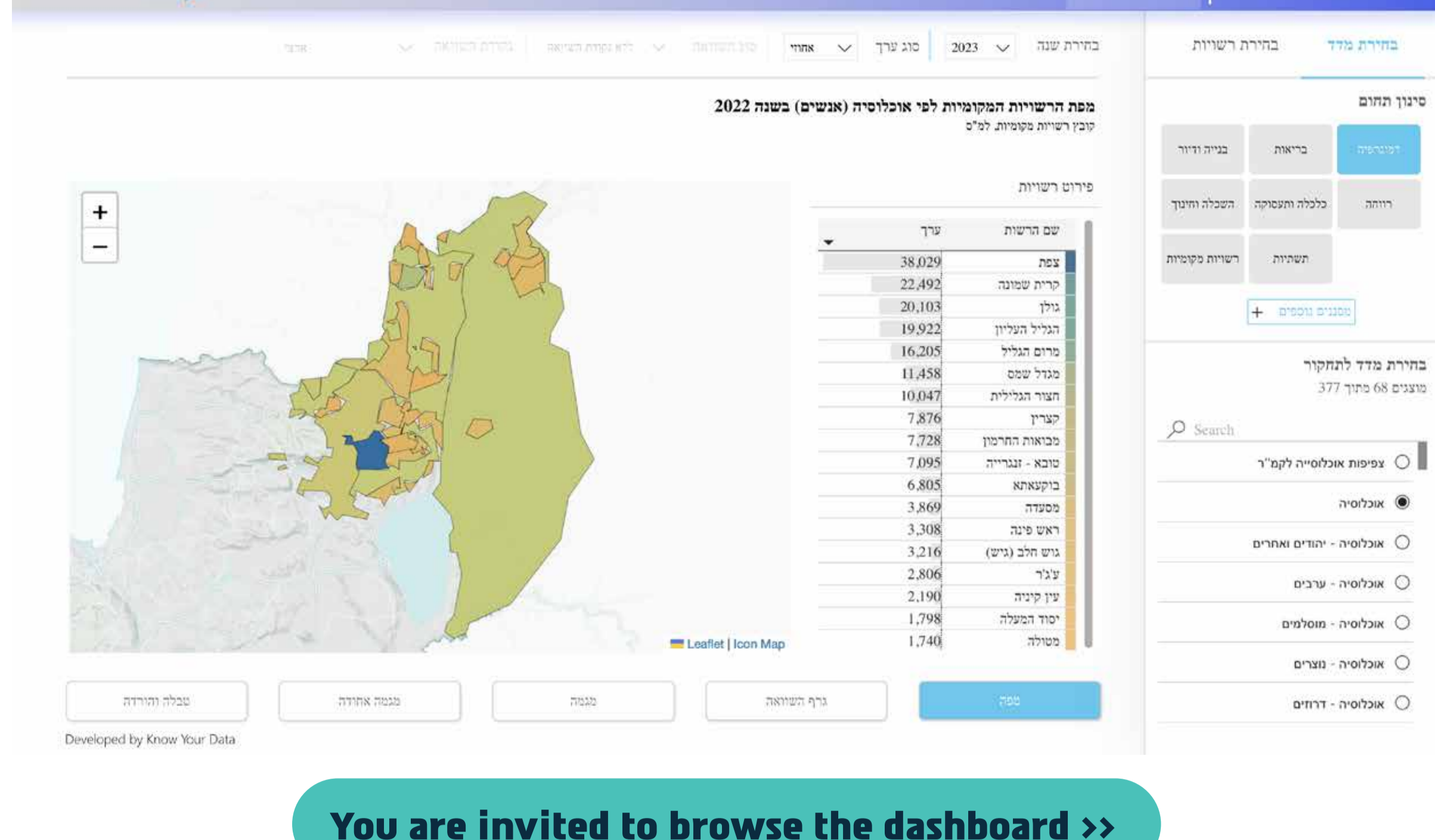
Regional Knowledge center East Galilee

Newsletter – July 2025

Dashboard of the Eastern Galilee Regional Knowledge Center

The Eastern Galilee Regional Knowledge Center presents the regional dashboard, an advanced system that includes administrative data and the quality of life index developed and measured by the center every two years.

- Using the dashboard, you can:
- Follow the results of the studies conducted by the Knowledge Center in the cluster
 - View the cluster's authorities updated data on education, society, employment, and more, with comparison options for the entire country.

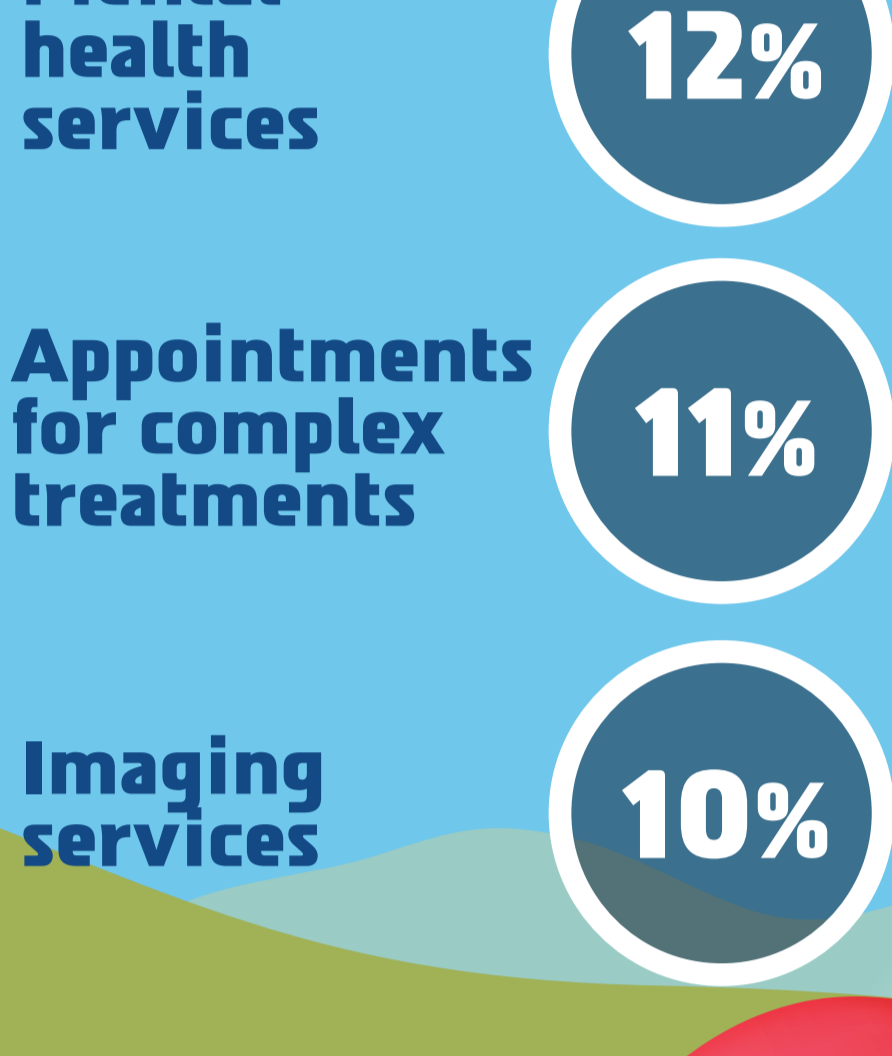


You are invited to browse the dashboard >>
The content is available in Hebrew only
For inquiries, please contact: yifatk@telhai.ac.il

Regional Health Study¹

Percentage of respondents who expressed high satisfaction with the quality and services availability of medical care

Availability of appointments:



Quality of service:



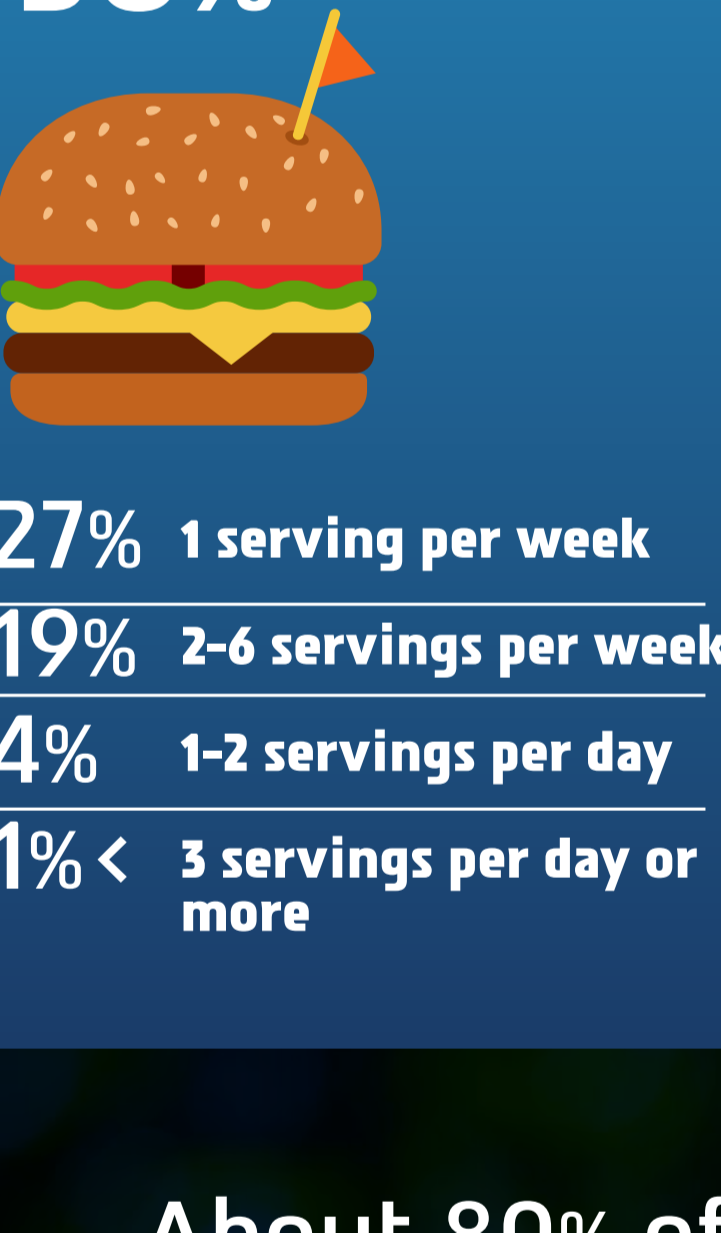
66% of respondents gave up on seeing a specialist. Of these, **48%** gave up due to a lack of availability of appointments.

1. The study was conducted by the Eastern Galilee Health Unit and the Regional Knowledge Center in collaboration with the Ministry of Health.. The study was conducted in February 2025, and 1,182 residents participated in it.

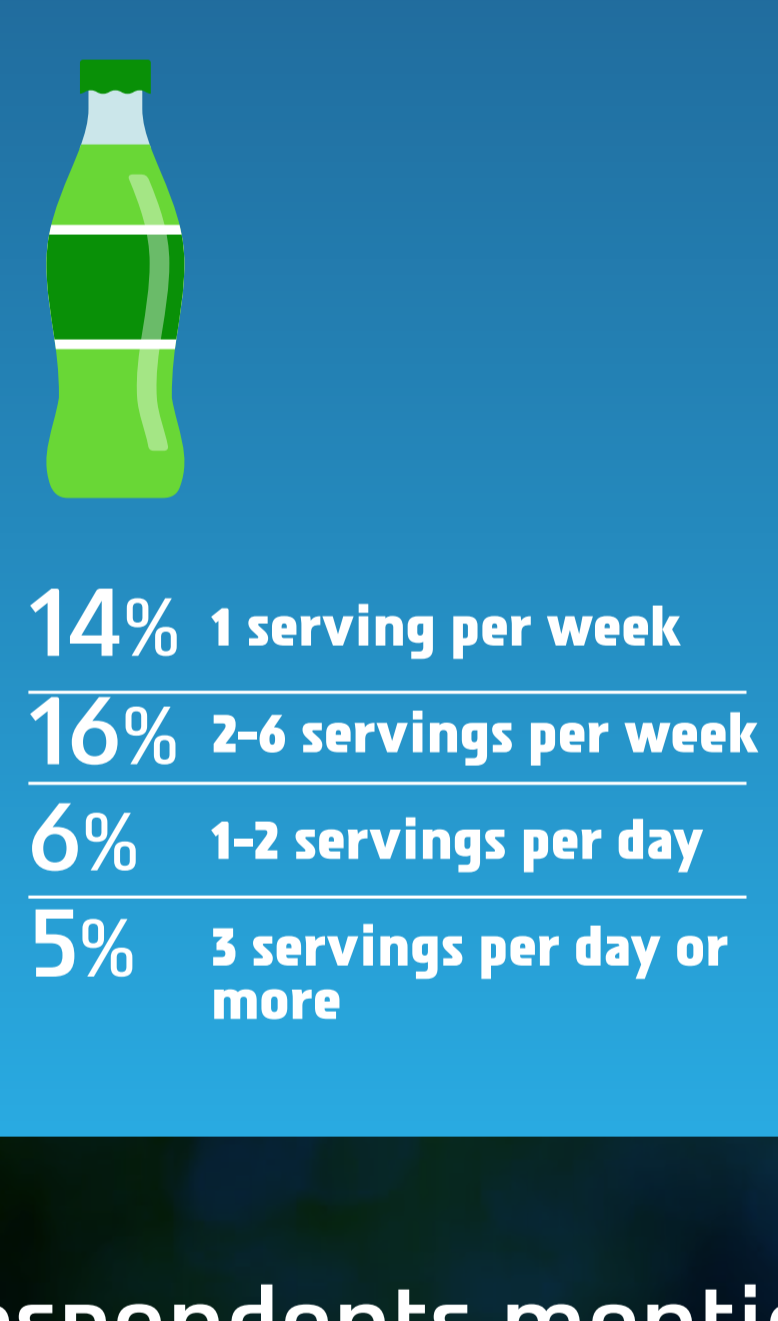
Increase in health-threatening behaviors:



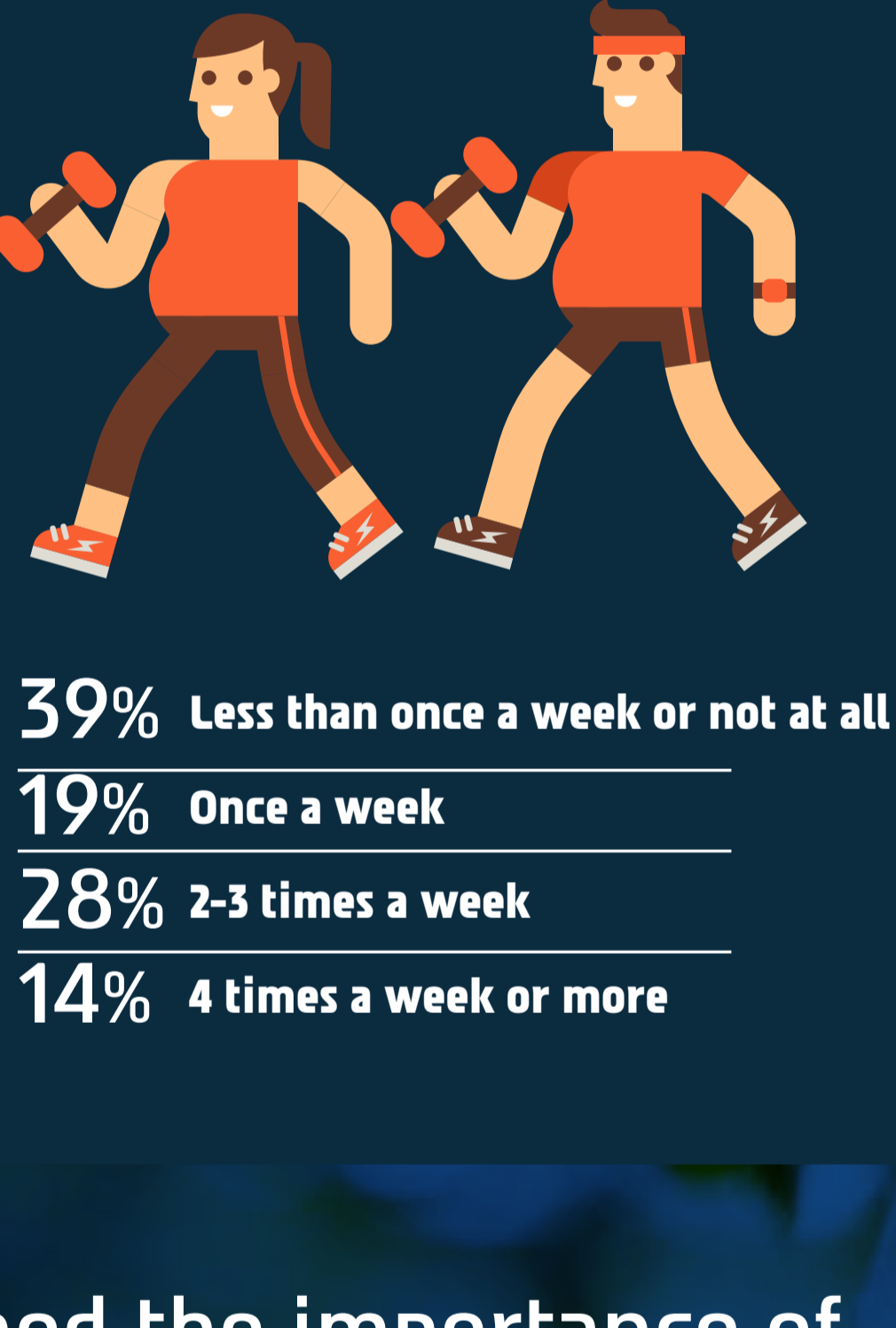
The questions asked in the area of nutrition examined the frequency of consumption of purchased food:



Frequency of drinking sugar-sweetened beverages or sugar substitutes:



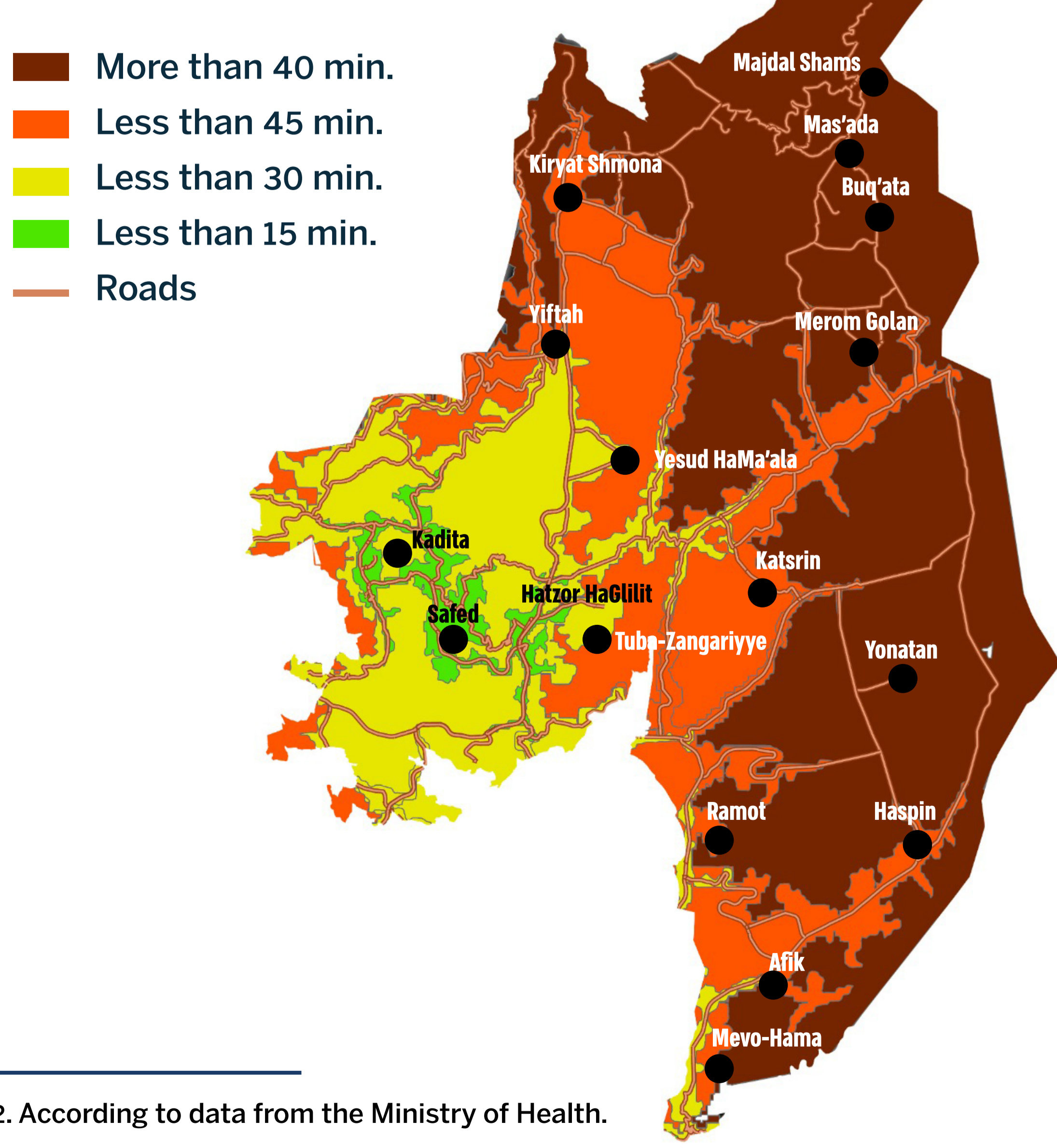
Frequency of physical activity for fitness purposes in the past year:



About 80% of respondents mentioned the importance of local authorities' activities on health promotion issues, such as:



Average travel time to the nearest hospital² "Ziv" in Safed or "Poriah" in Tiberias



2. According to data from the Ministry of Health.

For more information:
Regional Knowledge Center
meiraat@telhai.ac.il